



# Leading Technology Partner

Simplifying complex operations  
with automated solutions



**Mr. Bajrang Garg**  
Managing Director

Energy & Power are the vitals for any human or industry. We are privileged to be a part of this ever growing industry which contributes to majority GDP. Globally, Switchgear Market is valued above 70 Billion USD. There is a potential to grow at a CAGR of 7% and above. Thus, there are infinite possibilities for us to explore in this market.

With our three decades plus of experience in this industry, we have been a consistent choice for our customers. We feel proud in being identified as the complete solution provider for our industry.

With digital transformation worldwide, our industry must focus on next-generation digital tools and technologies. There is an urgent need to invest heavily to remote access and new age technologies like AI, ML, IoT and others. We aim to discover more such solutions to unlock the next level of growth engine for our business.

To fulfill our ambitious plans, we believe in being the equal opportunity provider. Hence, recruiting young and experienced minds for a better tomorrow. As a business, it is not only about self-accomplishments. We believe in contributing back to our community and society with our social initiatives.





## About us

**Balaji Switchgears** initiated its operations in the year 1990. Following **33 years** of our operations, we've become the leading technology partner in India today. We cater to supply requirements of low voltage switchgear & automation products along with all integrating components like cables, enclosures, panels, ducts, meters, capacitors etc.

With the support of our electrical and software engineers, we have developed expertise and provide the service support of Panel commissioning and programming support to our customers. Our customer basket includes leading OEMs, Panel Builders, Contractors, and End-users from Food & Beverage, Packaging & Bottling, HVAC, Oil & Chemical, Agriculture, Defense segments and Government authorities.



## Mission/Vision/Values

### VISION

To be the ideal automation partners for the companies of tomorrow and shape the future of switchgear products in the industry.

### MISSION

Our mission is to be your one-stop solution provider for complete Low-Voltage Industrial & Automation products.

### VALUES

- Ensure excellent service support
- Add value to our customers
- Redefine innovation in the industry
- To contribute back to the society





## Awards and Recognition

### Awards & Recognition for Shaping the Industry

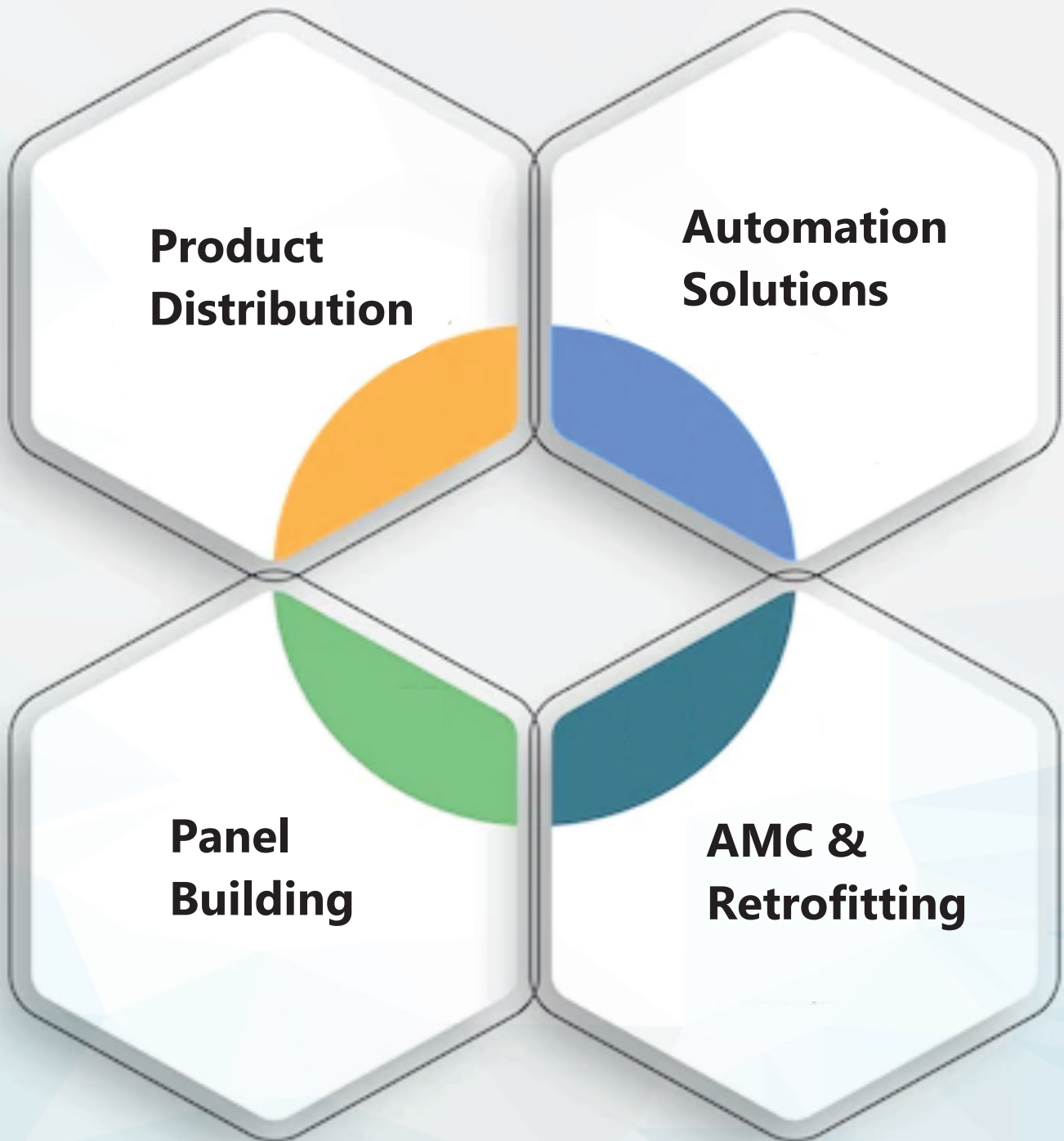
We are honored to be recognized for our accomplishments as a leading technology partner committed to providing the highest quality of products delivered through impeccable customer service over the years.



- Schneider Electric Royal Trailblazer Award, 2022
- Udaan-The Rising Entrepreneurs, 2022
- Omron Product Champion-My Relays and Proximity Sensors, 2022
- Commitment to Excellence and Completing 25 Years of Partnership with Schneider Electric, 2021
- Product Champion for Proximity Sensors by OMRON, 2020
- Game Changer Performance (Covid Heroes) by Schneider Electric, 2020
- Master Blaster award by Schneider Electric, 2020
- Schneider Electric India Foundation Event, 2017
- Best Partner Award Regional Sales-North by Schneider Electric, 2016
- Growth Award by Omron India, 2015
- Telemecanique Growth Award by Telemecanique Sensors, 2014
- Growth Award by Omron India, 2014
- Best Industry Sales North India by Schneider Electric, 2014
- Best Partner Industry-North by Schneider Electric, 2013



## Business Segments





## Serving Industries

We provide Customized Low Voltage Switchgear & Automation Solutions to various industries like Food & Beverage, Packaging & Bottling, HVAC, Agriculture, and Manufacturing. Adding to it, our warehouse, spread over 13000 Sq. Ft. ground area with 7000 SKUs helps us to stock products to meet the market demand. With our in-house team, we assure to provide the best solution to various industry needs. Vast product portfolio along with Principal Partners profile helps to serve our customers proficiently and fast.

### LV Switching & Control Gears



### Controlling & Signalling



### Industrial plug & Socket



### Enclosure Systems



### Meters & Capacitors



### Automation & Sensors



### Wires, Cables & Accessories



## Product Offerings

### LV SWITCHING & CONTROL GEARS

ACB | MCB | MCCB | RCCB | RCBO |  
MPCB | Contactors | Relays | Changeovers  
ATS | Distribution Board



### CONTROLLING & SIGNALLING

Tower Lights | Pushbuttons | Pilot Lights |  
Foot Switch | Buzzer | Pendant Station | Joystick



### INDUSTRIAL PLUG & SOCKET

Insulated Plugs | Insulated Sockets | Metal Clad P&S  
Enclosures with P&S | Receptacles Combinations  
(Kaedra)



### ENCLOSURE SYSTEMS

Wall Mounted | Floor Standing |  
SS Enclosures | Cooling Units | Filters



### METERS & CAPACITORS

Meters | EMS Systems | APFC Panels & Relays | Detuned Reactors |  
Capacitors



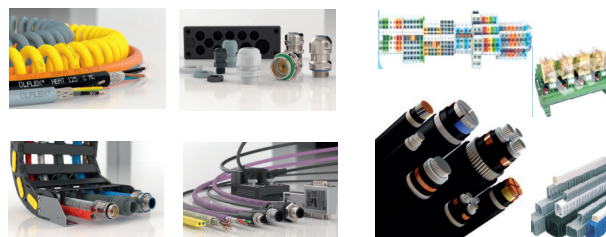
### AUTOMATION

PLC | Drives | HMI | Power Supplies | Servo |  
Encoder | Timer | SSR | Limit Switch |  
Level Controllers | Soft Starters



### WIRES, CABLES & ACCESSORIES

Wires | Cables | Conduit Pipes | Glands | Terminal Blocks |  
Din Rails | Wire Ducts | Relay Cards | Tools & Accessories





## Our Valued Partners



Schneider Electric SE is a French multinational company providing energy and automation digital solutions for efficiency and sustainability. It addresses homes, buildings, data centers, infrastructure and industries, by combining energy technologies, real-time automation, software and services.



Trusted manufacturer of control equipment, factory automation systems, electronic components, automotive electronics, ticket vending machines and medical equipment, ensuring you of high-quality Japanese technology.



An independent industrial group specializing in control and safety of LV electrical energy for industry, service sector and safety of low voltage electrical networks, serving globally.



Telemecanique Sensors, is a global leaders in the design and manufacture of automation sensors, limit switches and RFID systems for a range of demanding industries such as water, rail and material handling.



Promising German technology products in India, LAPP designs and manufactures all kind of cables and accessories. They also provide customised cabling solutions.



One of the leading Indian brands, KEI is into manufacturing of copper and aluminium cables for Infrastructure, defence, telecommunication and other industries.



Rittal is a German company manufacturing electrical enclosures for use in industrial settings.



Connectwell is the leading manufacturer of Terminal Blocks in India. In addition to Din Rail and PCB Terminal Blocks, Connectwell now offers a large range of products including Interface Modules, Professional Tools and Switching Power Supplies.



Trinity Touch is engaged in manufacturing of high quality cable glands, Wiring Duct, DIN Rail, Tribbox, Enclosures, Solutions for Solar wind Telecom Railway.



nVent HOFFMAN, part of nVent, a company headquartered in the US, is a global provider of electrical enclosures .It offers one of the most comprehensive ranges of industrial enclosures and accessories for Automation and Control applications, Heating Ventilation and Air-conditioning (HVAC) and Power and Distribution systems.

## International Market Distribution

With three decades of service to the industry we are now globally recognized. Our exports are in over 5 continents and over 11 countries covering Asia-Pacific, Middle East and other parts of the world. We intend to be a global partner for your LV/MV Solutions.



“

We make it happen for you  
**GLOBALLY**

Simplifying complex operations with  
automated solutions

”



# Gyanomation Systems

## INTRODUCING

### NEW AGE Technology for Integrated Panel Manufacturing Solution.

Balaji Switchgears launches the new age Gyanomation Systems-- a new business vertical for integrated Panel Manufacturing solutions that include PLC and VFD Panels, MCC & PCC, DOL Starters & Star-Delta Starters, Distribution Boards, and Junction Boxes. The panels are designed to address the challenges posed by multiple industries that need Environment Monitoring Systems, Poultry equipment, Extruder/Extrusion Plants, Leading Machines OEM, and SPM Manufacturers etc.

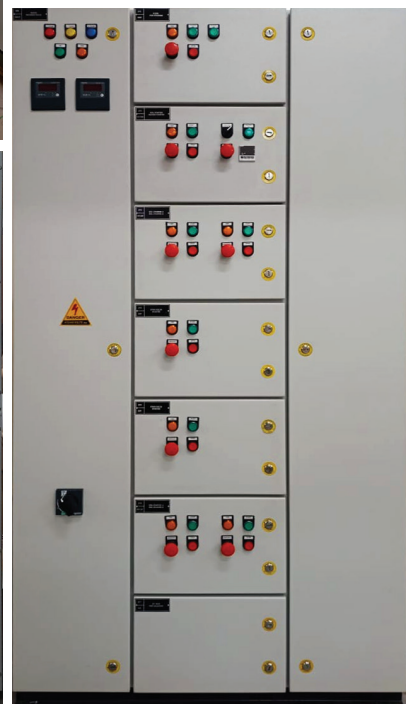
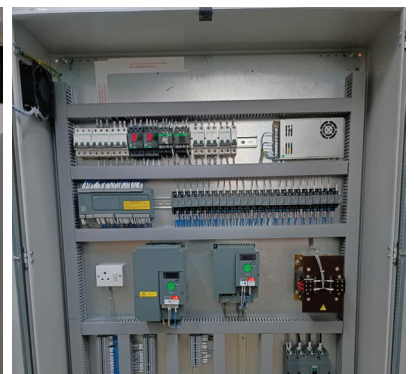
The integrated panels provide the best value for money and as we use globally renowned components like Panels from Rittal and Nvent, Switchgear from Schneider Electric, Omron, Wires & Accessories from Lapp & Connectwell, thus adding efficiency and safety to the performance.

### Few Keys Clients

- Talwandi Sabo Power Plant
- GE
- ALSTOM
- IIT
- ICRISAT
- CSIR Palampur
- Schneider Electric

### Industries Catered

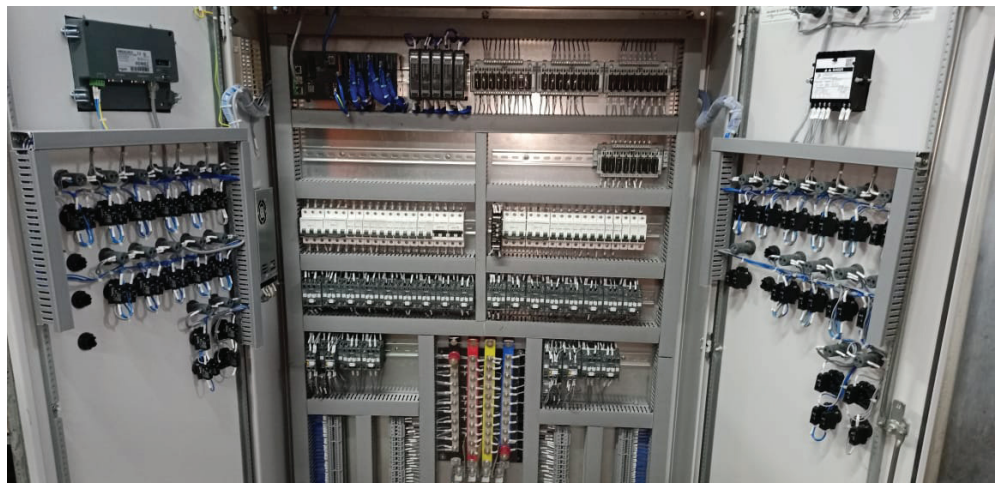
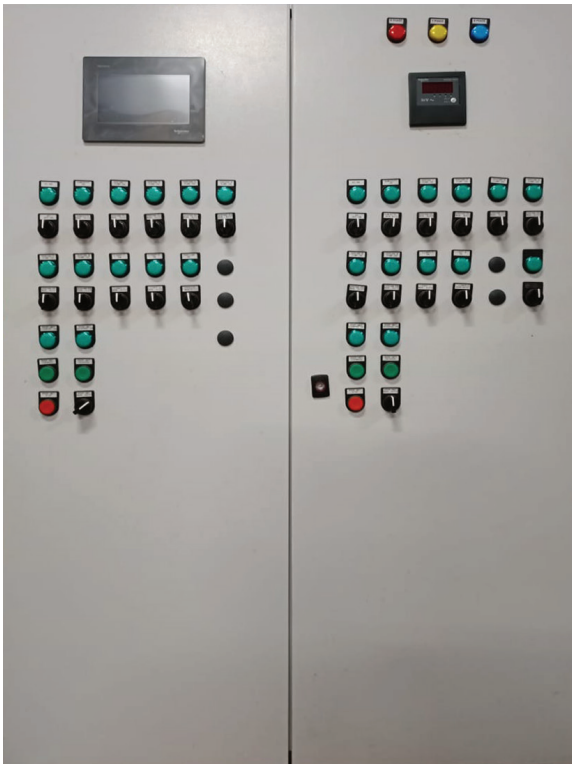
- Environment Monitoring System
- Poultry Equipments
- Extruder/Extrusion Plants
- Leading Machines OEM
- SPM Manufacturers
- Buildings



# Gyanomation Systems

## Types of Solution Manufactured

- PLC Panels
- VFD Panels
- MCC & PCC
- DOL Starters & Star-Delta Starters
- Distribution Boards
- Junction Boxes





## Customer Service Support

We advance our skills on a continuous basis to stay innovative and provide our customer complete satisfaction from pre-sales to post-sales. With customer satisfaction score of 90%, we aim to satisfy all our customers by fulfilling our ultimate vision. Assurance of supply of globally renowned quality products approving necessary International Standards. With the strength of in-house service team, we promise to resolve to our customer's issues telephonically or on-site within 24 to 48 hours.



**Excellent Service  
Support**



**Quality  
Assurance**



**Assured  
Warranty**



**Competitive  
Price**

## Successful Project Installations

Project Name	Year of Commission	Location	Value	Details
HT Transformer	2021	Tata Steel BSL	40MINR	Supply of 40MVA & 31.5MVA HT transformers
Covid Hospital Support	2021	Panipat	2MINR	During Covid outbreak 1000 bedded hospital was being constructed in Panipat for which, contract was awarded to a Panipat based panel builder. Since material was critical, we managed to supply the same from Delhi despite all the lockdown difficulties. Ensuring that the hospital starts its operations immediately.
Green House Project	2020	ICAR Sites	3MINR	Supply and commissioning of Green House PLC panels at various ICAR Sites.
Sanitizer Machine	2020		4MINR	When Covid pandemic started, we along with one of our OEM were the first ones to make sanitizer tunnels for DRDO and PMO. Despite various difficulties of lockdown, restriction in movement of people and safety hazards, we managed to serve our customer with their R&D.
Maholla Clinic	2019	Maholla Clinics, Delhi	4MINR	Executed supply of 50 Maholla Clinics done by Delhi Govt thru a leading contractor.
LV Panels-2	2018	Talwandi Sabo Pvt Ltd (unit of Vedanta)	3MINR	Supply of various maintenance boxes, Hopper Heater Panels.
LV Panels-1	2016	Eesti Energia, Estonia	6MINR	Supply of AJB & BJB thru Elstom Ltd.

**And many more..**



## Testimonials



**Balaji Switchgears** has been recognized as our “PREFERRED VENDOR” for the year 2017-18 for their consistent performance. They are our top most rated vendor on the basis of overall business parameters which include excellent quality service and product offerings.



We highly appreciate our long association and recognize your outstanding work as our most reliable supplier. Your work stands out for excellence in handling queries with a quick turnaround time. We laud your sincere efforts.



**Balaji Switchgears** has maintained their position as Vendor Category ‘A’ on the basis of their consistent quality service. Great customer support and promptness in resolving any queries.



We truly appreciate the outstanding work done by Balaji Switchgears during COVID Period. Balaji Switchgears provided the best in class technical & commercial support, also delivered the projects on time despite of many logistics challenges. BSPL stood hand in hand with us and expedited the deliveries efficiently.



**BSPL** was evaluated in Capability Evaluation on the basis of overall Observation, Strength & Opportunity of Improvement. They have received an overall rating of 83.75% The overall rating was reached due to their consistent performance .



## Our Clientele

Our varied list of clients distributed among various industries.





## Corporate Social Responsibilities

Continuing commitment to behave ethically while improving the quality of life of the workplace and their families as well as the local community and society at large.



At BSPL foundation, our moto is "सेवा परमो धर्म" we believe in serving the community by making a difference in the lives around us. We play our role towards the society via instrumental drives towards Food/Cloth distribution, Environmental protection and Education for all initiatives.

We at **Balaji Switchgears** in collaboration with Schneider Electric serve various charitable trusts for their education initiatives. These Trusts work towards the education of youth of India in training & up-skilling them about electrical programming and installations.

We conduct regular food distribution drives for underprivileged groups of society. Protecting our mother earth we undertake various afforestation initiative in different parts of the country ensuring that our future generations get a better place to live.

"Recognized by global player **Schneider Electric** Foundation on the CSR contribution done by **Balaji Switchgears**"





## Balaji Switchgears Pvt. Ltd.

### Head Office:

2006, Katra Lachhu Singh, Bhagirath Palace, Delhi-110006

**Contact No:** 011-41100313/0314, 011-23860986/3969

### Marketing Office:

Plot No. 70, Building No. A-13, Rama Road, Near Kirti Nagar  
Metro Station, Delhi-110015

**Contact No:** 011-44755186/187/188, 011-47093969

**Email:** mktgindia@balajiswitchgears.com

## Certifications

**ieema**  
your link to electricity



**ISO**  
9001:2015  
CERTIFIED

follow us on:

