

Rittal – The System.

Faster – better – worldwide.

► Stainless Steel



ENCLOSURES

POWER DISTRIBUTION

CLIMATE CONTROL

IT INFRASTRUCTURE

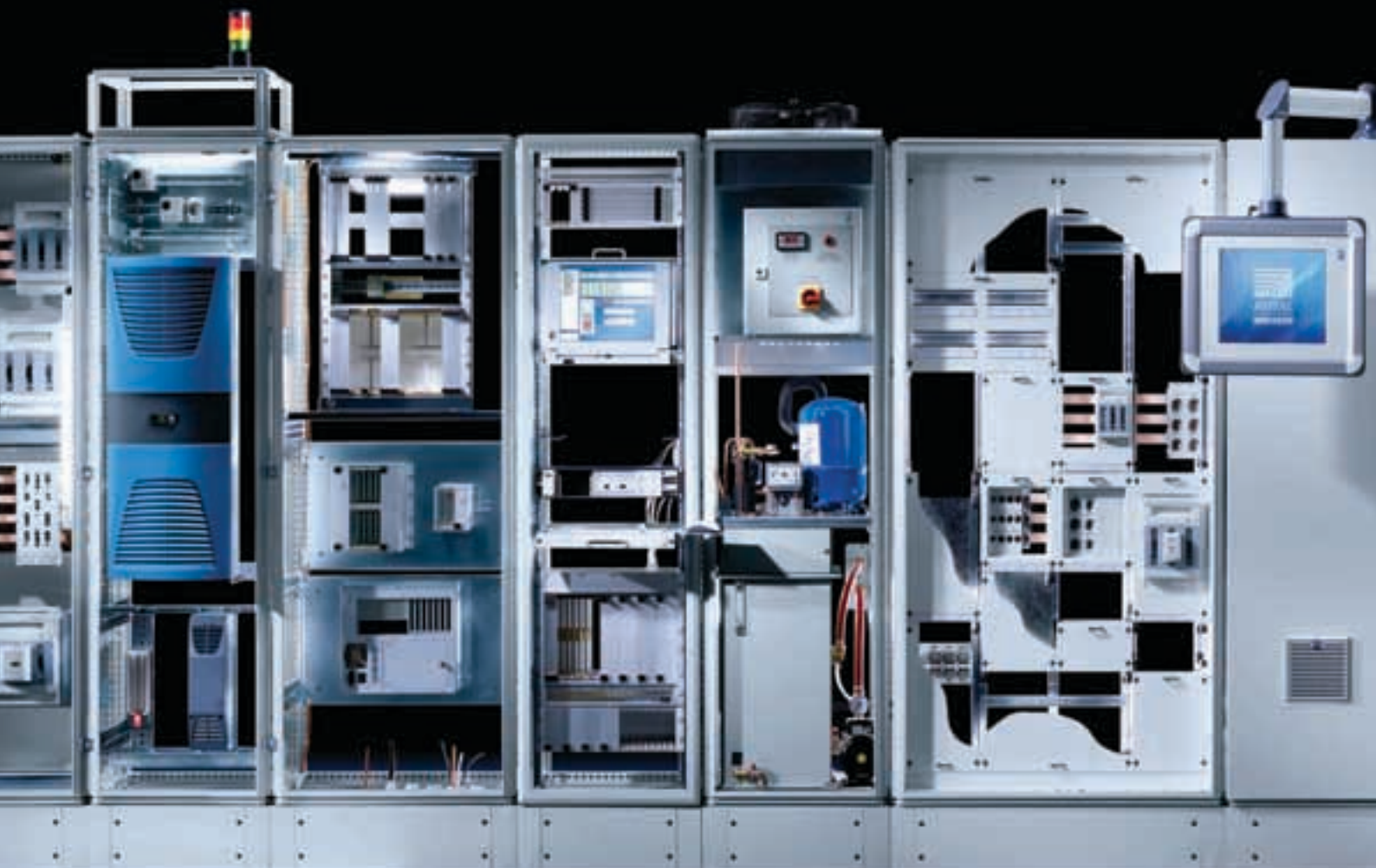
SOFTWARE & SERVICES

FRIEDHELM LOH GROUP



Rittal – The System.

Faster – better – worldwide.



ENCLOSURES

POWER DISTRIBUTION

CLIMATE CONTROL

FRIEDHELM LOH GROUP

02

Stainless Steel

Rittal – The System.

The whole is more than the sum of its parts.

The same is true of “Rittal – The System.” With this in mind, we have bundled our innovative enclosure, power distribution, climate control and IT infrastructure products together into a single system platform. Complemented by our extensive range of software tools and global service, we create unique added value for all industrial applications: Production plant, test equipment, facility management and data centres. Following our simple principle, “faster – better – worldwide”, we combine innovative products with efficient service for optimum results.

Faster – with our “Rittal – The System.” range of modular solutions, which guarantees fast planning, assembly, conversion and commissioning thanks to system compatibility.

Better – by being quick to translate market trends into products. In this way, our innovative strength helps you to secure competitive advantages.

Worldwide – thanks to global networking across 150 locations. Rittal has over 60 subsidiaries, more than 250 service partners and over 1,000 service engineers worldwide. For more than 50 years, we have been on hand to offer advice, assistance and product solutions.

IT INFRASTRUCTURE

SOFTWARE & SERVICES



Stainless Steel



Accessories Page 6

Material:

- Enclosure: Stainless Steel
- Door: Stainless Steel, all-round foamed-in PU seal
- Mounting plate: Sheet Steel
- Locks: Die-cast zinc

Surface finish:

- Enclosure and door: Brushed, grain 240
- Mounting plate: Zinc-plated
- Locks: Nickel-plated

Protection category:

Seetables.

Supply includes:

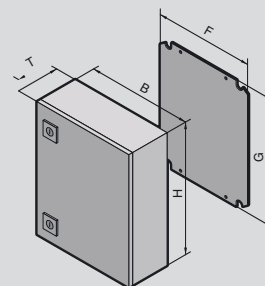
- Enclosure with door(s)
- Cam lock or 3-point lock system (for AE 1017.X00) with double-bit insert
- Mounting plate

Approvals:

- UL
- CSA
- TÜV
- Germanischer Lloyd
- Russian Maritime Register of Shipping
- Lloyds Register of Shipping
- Bureau Veritas
- VDE

Detailed drawings:

Available on the Internet.



Compact enclosures AE

Width (B) mm	Packs of	200	300	380	380	300	380
Height (H) mm		300	300	300	300	380	380
Depth (T) mm		155	210	155	210	210	210
Mounting plate width (F) mm		162	254	334	334	275	334
Mounting plate height (G) mm		275	275	275	275	334	355
Model No. AE		1002.600	1003.600	1004.600	1011.600	1005.600	1006.600
Material	1.4301 (AISI 304)	1	■	■	■	■	■
	1.4404 (AISI 316L)	1	The above sizes are available on request				
Door		1	1	1	1	1	1
Weight (kg)		4.1	6.9	7.4	8.4	8.4	9.8
Protection category		IP 66 to IEC 60 529, complies with NEMA 4X					

Accessories

Accessories							
Rails for interior installation		4	–	2373.210	–	2373.210	2373.210
Rain canopy	1.4301 (AISI 304)	1	2470.000	2361.000	2471.000	2472.000	2361.000
Wall mounting bracket	1.4301 (AISI 304)	4	2433.000	2433.000	2433.000	2433.000	2433.000
	1.4404 (AISI 316L)	4	2433.500	2433.500	2433.500	2433.500	2433.500
Wall angle	1.4301 (AISI 304)	4	2583.010	2583.010	2583.010	2583.010	2583.010
Pole clamp		1	2584.000	2584.000	2584.000	2584.000	2584.000
Cam lock 1.4404 (AISI 316L)	Standard	1	2304.000	2304.000	2304.000	2304.000	2304.000

Compact enclosures AE

Width (B) mm	Packs of	600	500	500	600	600	760
Height (H) mm		380	500	500	600	760	760
Depth (T) mm		210	210	300	210	210	300
Mounting plate width (F) mm		549	449	449	549	549	704
Mounting plate height (G) mm		355	470	470	570	730	730
Model No. AE	1	1009.600	1007.600	1013.600	1010.600	1012.600	1014.600
Material	1.4301 (AISI 304)	■	■	■	■	■	■
	1.4404 (AISI 316L)	The above sizes are available on request					
Door		1	1	1	1	1	1
Weight (kg)		14.6	15.7	18.4	23.5	30.2	42.5
Protection category		IP 66 to IEC 60 529, complies with NEMA 4X					

Accessories

Rails for interior installation	4	2373.210	2373.210	2373.300	2373.210	2373.210	2373.300
Rain canopy	1.4301 (AISI 304)	1	2473.000	2362.000	–	2473.000	2474.000
Wall mounting bracket	1.4301 (AISI 304)	4	2433.000	2433.000	2433.000	2473.000	2433.000
	1.4404 (AISI 316L)	4	2433.500	2433.500	2433.500	2433.500	2433.500
Wall angle	1.4301 (AISI 304)	4	2583.010	2583.010	2583.010	2583.010	2583.010
Pole clamp		1	2584.000	2584.000	2584.000	2584.000	2584.000
Cam lock 1.4404 (AISI 316L)	Standard	1	2304.000	2304.000	2304.000	2304.000	2304.000

Width (B) mm	Packs of	800	800
Height (H) mm		1000	1200
Depth (T) mm		300	300
Mounting plate width (F) mm		739	740
Mounting plate height (G) mm		955	1155
Model No. AE	1	1016.600	1017.600
Material	1.4301 (AISI 304)	■	■
	1.4404 (AISI 316L)	The above sizes are available on request	
3-point lock system		–	■
Door (s)		1	1
Weight (kg)		52.9	61.5
Protection category		IP 66 to IEC 60 529, complies with NEMA 4X	

Accessories

Rails for interior installation	4	2373.300	2373.300
Rain canopy	1	2475.000	2475.000
Wall mounting bracket	1.4301 (AISI 304)	4	2433.000
	1.4404 (AISI 316L)	4	2433.500
Wall angle	4	2583.010	2583.010
Cam lock 1.4404 (AISI 316L)	Standard	1	2304.000

Stainless Steel

Accessories



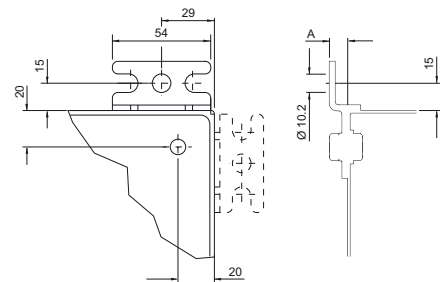
Wall mounting bracket

For the attachment of KL, EB, BG, AE, CM and EL enclosures, TP consoles as well as DK wall-mounted distributors and small fibre-optic distributors.

Supply includes:

Assembly parts for mounting on the enclosure.

Material	Wall distance (A) mm	Packs of	Model No. SZ
Stainless Steel 1.4301 (AISI 304)	10	4	2433.000
Stainless Steel 1.4404 (AISI 316L)	10	4	2433.500



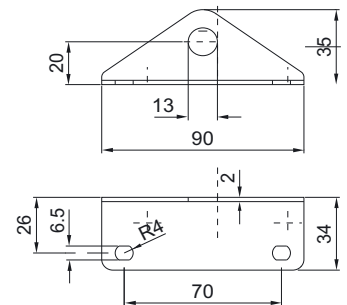
Wall angle

For compact enclosures (additional holes required in the enclosure).

Supply includes:

Assembly parts for mounting on the enclosure.

Material	Colour	Packs of	Model No. SZ
Stainless Steel 1.4301 (AISI 304)	—	4	2583.010



Rails for interior installation for AE

For mounting in the enclosure, no machining required. Suitable for all-round mounting on the sides, base and roof areas.

Variable with 2 rows of system punchings, creates additional mounting space e.g. for:

- TS punched section with mounting flange
- Enclosure lights
- Door-operated switch
- Door stay
- Cable conduit holder

For enclosure depth mm	Packs of	Model No. SZ
210	4	2373.210
250	4	2373.250
300	4	2373.300

Material:

Sheet Steel

Surface finish:

Zinc-plated

Note:

Other mounting options:

- Mounting plates, locatable
- Mounting plates, screw-fastening, large
- Mounting plates, screw-fastening, small
- Mounting brackets



Cam lock

With double-bit insert

Made entirely from
Stainless Steel 1.4404 (AISI 316L)

Packs of	Model No. SZ
1	2304.000

Rain canopies

for AE, CM

Reliable protection for outdoor siting – with water run-off to the rear.
Easily retro-fitted

Supply includes:

Assembly parts.

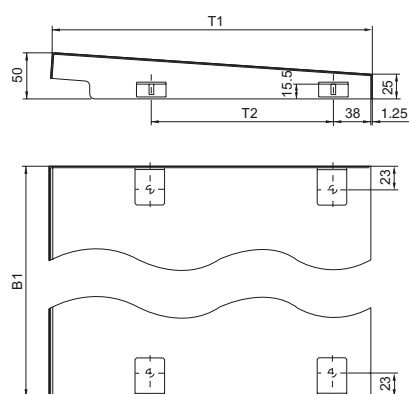
for AE, Stainless Steel version

Material:

Stainless Steel 1.4301 (AISI 304)

Surface finish:

Brushed, grain 240



B1 = Enclosure width + 11 mm

T1 = Enclosure depth + 25 mm

T2 = Enclosure depth – 90 mm, from enclosure width 600 mm: Enclosure depth – 115 mm

Note:

For outdoor siting, we generally recommend a rain canopy above the enclosure or the gap between the door or screw-fastened rear panel and the enclosure, in order to protect against water and UV radiation.

The tests of IP protection categories for water protection (2nd code number to IEC 60 529) cannot be compared with an enclosure sited outdoors or under similar conditions.

Upon request, rain canopies of Sheet Steel, Stainless Steel or Aluminum can also be produced for other enclosures.

For		Model No. SZ
Enclosure width mm	Enclosure depth mm	
200	155	2470.000
300	210	2361.000
380	155	2471.000
380	210	2472.000
500	210	2362.000
600	210	2473.000
760	300	2474.000
800	300	2475.000

Pole clamp

for KL, EB, BG, AE, KS and CS wall-mounted enclosures

For reliable, convenient fastening to round or square poles.

For pole diameter/size:

- Ø from 40 to 190 mm
- □ from 50 to 150 mm

Material:

- Mounting angles, clamping section: Sheet Steel
- Clamping strap: Stainless Steel 1.4301 (AISI 304)

Packs of	Model No. SZ
1 set	2584.000

Surface finish:

Mounting angle, clamping section: Zinc-plated

Supply includes:

- 2 mounting angles, 600 mm long
- 4 clamping sections
- 2 clamping straps
- 4 clamping brackets
- 4 screws and captive nuts M8 for mounting on the enclosure.

Door stay

To secure the door in the open position.

For	Assembly	Packs of	Model No.
All AE Stainless Steel enclosures ¹⁾	Top	1	2519.000

¹⁾ With AE Stainless Steel, only in conjunction with perforated mounting strips.



Rittal – The System.

Faster – better – worldwide.

- Enclosures
- Power Distribution
- Climate Control
- IT Infrastructure
- Software & Services

Authorized Channel Partner.

RITTAL India Pvt Ltd.
No. 23 & 24 • KIADB Industrial Area • Veerapura
Doddaballapur - 561 203 • Bengaluru District
Tel: +91(0)80 3372 0700 • Fax: +91(0)80 3372 0866
Email: info@rittal-india.com • Website: www.rittal-india.com

ENCLOSURES

POWER DISTRIBUTION

CLIMATE CONTROL

IT INFRASTRUCTURE

SOFTWARE & SERVICES

FRIEDHELM LOH GROUP

