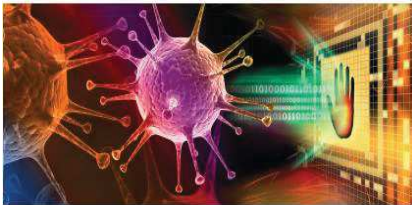


Machine Remote assistance solutions

EcoStruxure Secure Connect Advisor, a cyber secure solution, allows experts to remotely access your site machines with ready-to-use Harmony HMI, you can achieve minimal downtime and optimized production performance, without having a technician on site.

Schneider Electric Security Certificate Security Audit 2018



Tested Products: Schneider Electric GateManager 9250/9250i, Secure Connect SiteManager Embedded, Secure Connect LinkManager and Secure Connect LinkManager Mobile based on Release 7.4.
Audit Process: Modified NIST SP800-115 & OSSIM. Audit is partially based on applicable test results from SECOSIA security audit 2017 of 10.04.2017.
Concept Audit: BSI Grundschrift Catalog, IEC 62443-3-3, IEC 62443-4-2 Draft.
Component Audits: Vulnerability assessment, exploitation with standard tools, fuzzing on Ethernet interface, firmware signature evaluation, analysis of communication principle.
System Audit: Security assessment of end-to-end reference setup, threat assessment of 3rd party components based on CVEs, OWASP Top 10 threat analysis.
Test results: Tests passed without recommendations. A detailed report has been issued.

Successfully Passed

Koelnburg 28.02.2018

Prof. Dr. Peter Fröhlich

Prof. Dr. Andreas Grzempa

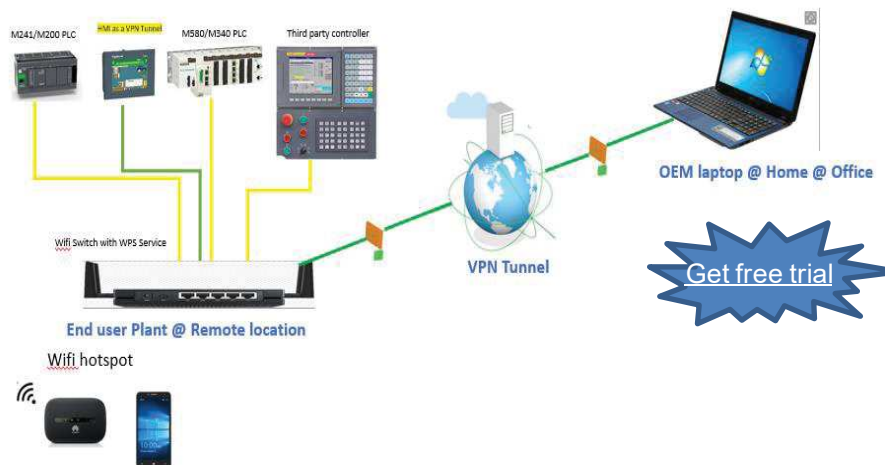
Protectem
Solutions for Embedded Security

www.protectem.de

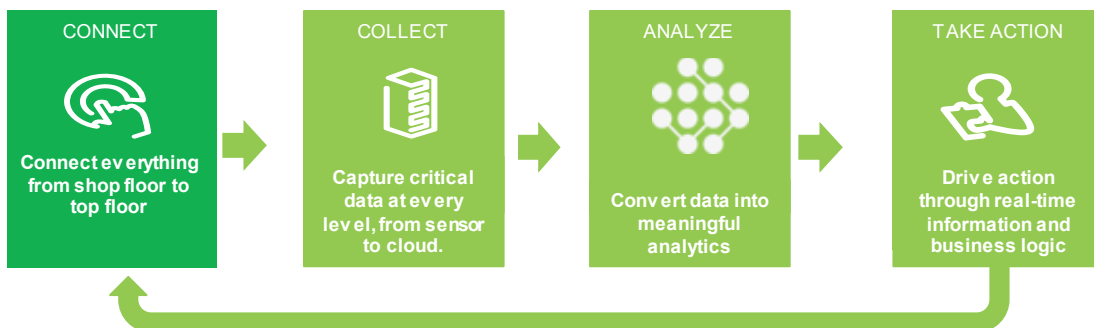
What's the impact of the machine-to-machine connectivity increase for industrial customers?

- Industrial organizations are significantly increasing the number of machines
- Enormous amounts of time, money, and travel costs are required to maintain these machines
- Customers want to ensure minimal machine downtime

EcoStruxure Secure Connect Advisor allows operators and experts to remotely access, program, diagnose and troubleshoot machines.



EcoStruxure Secure Connect Advisor is the first step to close the loop



Key Customer Benefits

Efficient and easy to use

- The advisor is embedded and ready-to-use for all Harmony HMI offers (terminals and industrial PC)
- Remote access to programming, diagnostics, control, and monitoring
- Reduce machine downtime
- Cost effective solution

Reliable and safe

- Cybersecure (end to end) for both OEMs and end users
- Gain secure access to remote devices over the internet
- Compliant with Industry level standards for security
- Vendor Agnostic
- Improved Total cost of ownership